

The World of Wasser-Geräte

Product catalogue
incl. gross prices 2023



Producer of water meters of international success

Wasser-Geräte GmbH in Spaichingen is an international producer of water meters. We've been developing and manufacturing water meters of high quality standard since 1947.

Advanced technology in all of the fields, teams of experts with unique know-how as well as highest precision let us become one of the market leaders.

Wasser-Geräte headquartered in Spaichingen with its production plants and MID testing facility in China employing about 200 people is nowadays one of the leading companies in the field of development and manufacturing of water meters and accessories.

As an international company we act according to strict guidelines, such as the pursuit of economic success as well as the preserving of our environment, the support of innovations and a strong customer focus.

Wasser-Geräte GmbH is one of the few German producers of water meters to be acting as an independent family business on the market.

**Wasser-Geräte GmbH – your reliable partner.
Yesterday, today and for the future.**



Proved quality is reliable quality

Wasser-Geräte has been following a quality strategy based on transparent, settled processes. Wasser-Geräte GmbH was certified 1996. Our sophisticated quality management ensures the quality of our products and the good name Wasser-Geräte does have.

Headquarters:

Wasser-Geräte GmbH, Spaichingen / Germany
Development, administration, sales, marketing, central warehouse, quality management, testing facility



Certification of the quality management
acc. to DIN EN ISO 9001:2008
Certificate no. 15.Z.040.A



Certified acc. to MID module D
since December 2012

Subsidiary:

Ningbo Wasser-Geräte Co. Ltd,
Zhejiang, China
Production und MID-testing facility



Certification of the quality management
acc. to DIN EN ISO 9001:2008
Certificate no. 00113Q26523R2M/3302



Certified acc. to MID module D
since December 2012



Contents

Domestic water meters	5 - 8
"ECO" Generation for modular radio, M-Bus and pulse transmission systems	9 - 22
System components of the "ECO" Generation	23 - 24
"FLOWIS" innovative products with parametrized Radio module	25 - 29
Apartment water meter "WG-ElectronicFlow"	30 - 34
Heat meters	35 - 39
Woltman meters	40 - 41
Installation rack	42 - 45
Mounting accessories	46 - 50
Accessories	51 - 54
Installation brackets	55 - 56
Things to know	57 - 63

Domestic water meters



Domestic water meters for cold water up to 40°C – wet dial transmitter refit



Multi-jet wet dial roller counter for horizontal and vertical installation
Measuring range R 100-H/ R 50-V

Type:	PU	Code number	MID flow-rate Q ₃	Flowrate Qn m ³ /h	Size inch	Length mm	Price € /pc	EAN-code
MNR	10	10005	4	2,5	3/4"	190	51,00	4029376100059
	8	10010	10	6	1"	260	75,00	4029376100103
	4	10020	16	10	1 1/2"	300	180,00	4029376100202
	1	10030	25	15	2"	300	420,00	4029376100301



Multi-jet wet dial roller counter for vertical installation
Measuring range R 100-V

Type:	PU	Code number	MID flow-rate Q ₃	Flowrate Qn m ³ /h	Size inch	Length mm	Price € /pc	EAN-code
MNRS	10	11005	4	2,5	3/4"	105	58,00	4029376110058
	8	11010	10	6	1"	150	98,00	4029376110102
	4	11020	16	10	1 1/2"	150	270,00	4029376110201

Separate fittings:

extension from 150 mm to 200 mm							
	1	90950			50	75,00	4029376909508

Cable for reed-contact



Type:	PU	Code number		Length mm	Price € /pc	EAN-code
RKK	10	10006	10l.	2 m	60,00	4029376100066

Domestic water meter for cold water up to 40°C – half-dry dial

Multi-jet half-dry roller counter for horizontal and vertical installation

Type:	PU	Code number	MID flow-rate Q ₃	Flowrate Qn m ³ /h	Size inch	Length mm	Price € /pc	EAN-code
TRP	10	19005	4	2,5	3/4"	190	94,00	4029376190050
	5	19010	6,3	6	1"	260	150,00	4029376190104
	4	19020	16	10	1 1/2"	300	235,00	4029376190203



Multi-jet half-dry roller counter for vertical installation

Type:	PU	Code number	MID flow-rate Q ₃	Flowrate Qn m ³ /h	Size inch	Length mm	Price € /pc	EAN-code
TRP-S	10	20005	4	2,5	3/4"	105	115,00	4029376200056



Multi-jet half-dry roller counter "light" version for horizontal and vertical installation

Type:	PU	Code number	MID flow-rate Q ₃	Flowrate Qn m ³ /h	Size inch	Length mm	Price € /pc	EAN-code
TRP MJ 04 HD	20	19000	2,5	1,5	1/2"	165	on request	4029376190005
	20	19002	1,6	1,5	3/4"	190	on request	4029376190029
	20	19025	4	2,5	3/4"	190	on request	4029376190258
	10	19004	6,3	3,5	1"	260	on request	4029376190043
	8	19007	10	5	1 1/4"	260	on request	4029376190074
	4	19026	16	10	1 1/2"	300	on request	4029376190265
	1	19009	25	15	2"	300	on request	4029376190098



Single-jet half-dry roller counter for horizontal and vertical installation

Type:	PU	Code number	MID flow-rate Q ₃	Flowrate Qn m ³ /h	Size inch	Length mm	Price € /pc	EAN-code
TRP SJ HD 40°	30	19203	1,0	1,0	1/2"	110	on request	4029376192030
	30	19200	1,6	1,5	1/2"	110	on request	4029376192009
	30	19202	2,5	1,5	3/4"	130	on request	4029376192023
TRP SJ HD 90°	30	19303	1,0	1,0	1/2"	110	on request	4029376193037
	30	19300	1,6	1,5	1/2"	110	on request	4029376193006
	30	19302	2,5	1,5	3/4"	130	on request	4029376193020



Separate fittings:

Pulse cable	1	19030	with 2,5 m cable, 10/100l				26,00	4029376190302
-------------	---	-------	---------------------------	--	--	--	-------	---------------

Domestic water meters for cold water up to 30°C – wet dial, cartridge meters



Multi-jet wet dial roller counter for horizontal installation

Type:	PU	Code number	MID flow-rate Q ₃	Flowrate Qn m ³ /h	Size inch	Length mm	Price € /pc	EAN-code
HPV	10	15004	4	2,5	3/4"	190	121,00	4029376150047



Multi-jet wet dial roller counter for vertical installation

Type:	PU	Code number	MID flow-rate Q ₃	Flowrate Qn m ³ /h	Size inch	Length mm	Price € /pc	EAN-code
SPV	10	15005	4	2,5	3/4"	105	140,00	4029376150054



Multi-jet cartridge for horizontal/vertical installation

Type:	PU	Code number	MID flow-rate Q ₃	Flowrate Qn m ³ /h	Size inch	Length mm	Price € /pc	EAN-code
OPV	10	15007	4	2,5			65,00	4029376150078

Separate fittings:

Non-return valve	10	15008			3/4"		10,40	4029376150085
Gasket for brass cap	10	15009		2,5	3/4"		6,60	4029376150092

"ECO" Generation
for modular radio, M-Bus and pulse transmission systems



Domestic water meters "ECO" type for cold water up to 40°C for modular radio, M-Bus and pulse transmission systems



Multi-jet dry dial roller counter for horizontal installation

Measuring range R 100-H

Type:	PU	Code number	MID flow-rate Q ₃	Flowrate Q _n m ³ /h	Size inch	Length mm	Price € /pc	EAN-code
MTW	10	16005	4	2,5	3/4"	190	168,00	4029376160053
	8	16010	10	6	1"	260	265,00	4029376160107
	4	16020	16	10	1 1/2"	300	445,00	4029376160206
	1	16030	25	15	2"	300	980,00	4029376160305



Multi-jet dry dial roller counter for vertical installation

Type:	PU	Code number	MID flow-rate Q ₃	Flowrate Q _n m ³ /h	Size inch	Length mm	Price € /pc	EAN-code
MTS	10	17005	4	2,5	3/4"	105	179,00	4029376170052
	6	17010	10	6	1"	150	245,00	4029376170106
	4	17020	16	10	1 1/2"	150	475,00	4029376170205

Multi-jet dry dial roller counter for downpipe installation

Type:	PU	Code number	MID flow-rate Q ₃	Flowrate Q _n m ³ /h	Size inch	Length mm	Price € /pc	EAN-code
MTF	10	18005	4	2,5	3/4"	105	207,00	4029376180051

Domestic water meters "ECO" type for warm water up to 90°C for modular radio, M-Bus and pulse transmission systems

Multi-jet dry dial roller counter for horizontal installation

Measuring range R 100-H

Type:	PU	Code number	MID flow-rate Q ₃	Flowrate Q _n m ³ /h	Size inch	Length mm	Price € /pc	EAN-code
MTX	10	10605	4	2,5	3/4"	190	178,00	4029376106051
	8	10610	10	6	1"	260	240,00	4029376106105
	4	10620*	16	10	1 1/2"	300	539,00	4029376106204

* Quality-tested execution



Multi-jet dry dial roller counter for vertical installation

Type:	PU	Code number	MID flow-rate Q ₃	Flowrate Q _n m ³ /h	Size inch	Length mm	Price € /pc	EAN-code
MTSX	10	11605	4	2,5	3/4"	105	215,00	4029376116050
	8	11610	10	6	1"	150	297,00	4029376116104
	4	11620*	16	10	1 1/2"	150	898,00	4029376116203

* Quality-tested execution



Multi-jet dry dial roller counter for downpipe installation

Type:	PU	Code number	MID flow-rate Q ₃	Flowrate Q _n m ³ /h	Size inch	Length mm	Price € /pc	EAN-code
MTFX	10	11705	4	2,5	3/4"	105	265,00	4029376117057

Note: System components from page 24 onwards.



Domestic water meter "ECO" for cold water up to 30°C for modular radio, M-Bus and pulse transmission systems



Cartridge meter

Type:	PU	Code number	MID flow-rate Q ₃	Flowrate Qn m ³ /h	Size inch	Length mm	Price € / pc	EAN-code
RTK-HPV	10	16000	4	2,5	3/4"	190	163,00	4029376160008

Separate fittings:

Cartridge	10	16001	4	2,5			84,00	4029376160015
Non-return valve	10	15008			3/4"		10,40	4029376150085
Protection cap	10	16003					6,00	4029376160039
Gasket for brass cap	10	15009		2,5	3/4"		6,60	4029376150092

Apartment water meters "ECO" type – for modular radio, M-Bus and pulse transmission systems

Measuring range R 80-H / R 50-V

Type:	PU	Code number	MID flow-rate Q ₃	Flowrate Qn m ³ /h	Size inch	Length mm	Price € / pc	EAN-code
ETW	30	25100	1,6	1,0	1/2"	110	56,00	4029376251003
Cold water	30	25101	2,5	1,5	1/2"	60	56,00	4029376251010
	30	25102	2,5	1,5	1/2"	80	49,00	4029376251027
	30	25103	2,5	1,5	1/2"	110	49,00	4029376251034
	30	25105	4	2,5	3/4"	130	51,00	4029376251058
	ETW	30	25600	1,6	1,0	1/2"	110	56,00
Warm water	30	25601	2,5	1,5	1/2"	60	56,00	4029376256015
	30	25602	2,5	1,5	1/2"	80	49,00	4029376256022
	30	25603	2,5	1,5	1/2"	110	49,00	4029376256039
	30	25605	4	2,5	3/4"	130	51,00	4029376256053



Measuring range R 160-H / R 63-V

Type:	PU	Code number	MID flow-rate Q ₃	Flowrate Qn m ³ /h	Size inch	Length mm	Price € / pc	EAN-code
ETW	30	21102	2,5	1,5	1/2"	80	59,00	4029376211021
Cold water	30	21103	2,5	1,5	1/2"	110	59,00	4029376211038
	30	21105	4	2,5	3/4"	130	61,00	4029376211052
	ETW	30	21602	2,5	1,5	1/2"	80	59,00
Warm water	30	21603	2,5	1,5	1/2"	110	59,00	4029376216033
	30	21605	4	2,5	3/4"	130	61,00	4029376216057

Note: System components from page 24 onwards.



Wash basin meter "ECO" for installation between corner valve and armature

Wash basin meter including single jet meter 80 mm



Type:	PU	Code number	MID flow-rate Q ₃	Flowrate Qn m ³ /h	Size inch	Length mm	Price € /pc	EAN-code
WTZ Cold water	30	63102	2,5	1,5	1/2"	80	62,00	4029376631027
WTZ Warm water	30	63602	2,5	1,5	1/2"	80	62,00	4029376636022

Separate fittings:

flexible metal tube	10	63901				300	18,00	4029376639016
WTZ-coupling, complete	10	63900					29,00	4029376639009
WTZ upper part	10	63902			3/4"	10	14,50	4029376639023
WTZ lower part	10	63903			3/8"IG		14,50	4029376639030
Copper gasket for WTZ-lower part	10	63905			3/8"		0,60	4029376639054

Tap meters "ECO" for installation on hose connection



connection example

Tap meters including single jet meter 80 / 110 mm

Type:	PU	Code number	MID flow-rate Q ₃	Flowrate Qn m ³ /h	Size inch	Length mm	Price € /pc	EAN-code
ZHZ Cold water	30	84520	2,5	1,5	3/4"	80	71,00	4029376845202
ZHZ Warm water	30	84521	2,5	1,5	3/4"	110	71,00	4029376845219
	30	84530	2,5	1,5	3/4"	80	71,00	4029376845301
	30	84531	2,5	1,5	3/4"	110	71,00	4029376845318

Separate fittings:

ZHZ coupling complete, including lid	10	84640					38,00	4029376846407
ZHZ lower part	10	84633					14,00	4029376846339
ZHZ upper part	10	84634					18,00	4029376846346
ZHZ lid	10	84635					6,00	4029376846353
ZHZ coupling complete, without lid	10	84637					32,00	4029376846377



In-wall box meters "ECO"

Alternative version – 80 mm water meter including rosette and spacing ring

Type:	PU	Code number	MID flow-rate Q_3	Flowrate Q_n m ³ /h	Size inch	Length mm	Price € /pc	EAN-code
UPZ								
Cold water	30	83103	2,5	1,5	1/2"	80	76,00	4029376831038
Warm water	30	83603	2,5	1,5	1/2"	80	76,00	4029376836033

Separate fittings:

Rosette ø137x137 mm	1	83907				65	23,00	4029376839072
Blind rosette	1	83905					33,00	4029376839058
Spacing ring plastic	1	83906				15	4,00	4029376839065
Blind cover	10	83904				ø 65,5 mm	8,00	4029376839041
Slider	1	83910					9,00	4029376839102
O-ring for slider	1	83911					1,00	4029376839119
Complete gasket set for in-wall box	1	83912					4,00	4029376839126



Replacement type for converting an existing in-wall apartment meter 80 mm to an in-wall coax version

Type:	PU	Code number	MID flow-rate Q_3	Flowrate Q_n m ³ /h	Size inch	Length mm	Price € /pc	EAN-code
Measuring cartridge								
Cold water	30	50030	2,5	1,5	2"		56,00	4029376500309
Warm water	30	50040	2,5	1,5	2"		56,00	4029376500408
In-wall housing	10	23906			3/4" AG	80	48,00	4029376239063
In-wall collar, square rosette ø 137 x 137 mm, including ring								
	10	60022				85	35,00	4029376600221

Separate fittings:

Rosette ø137x137 mm	1	60012					19,00	4029376600122
---------------------	---	-------	--	--	--	--	-------	---------------



In-wall meters Wasser-Geräte "ECO"

In-wall compact meters – dry dial –
for modular radio, M-Bus and pulse systems



Connection thread M66 x 1,25

Type:	PU	Code number	MID flow-rate Q ₃	Flowrate Q _n m ³ /h	Size inch	Length mm	Price € /pc	EAN-code
in-wall meter incl. push-on rosette								
Cartridge cold water	10	33103	2,5	1,5			68,00	4029376331033
Cartridge warm water	10	33603	2,5	1,5			68,00	4029376336038



in-wall meter without push-on rosette

Cartridge cold water	10	32103	2,5	1,5			44,00	4029376321034
Cartridge warm water	10	32603	2,5	1,5			44,00	4029376326039



In-wall housing	10	33901			1/2"IG	110	38,70	4029376339015
	10	33902			3/4"IG	110	38,70	4029376339022
	10	33903			22 mm	110	38,70	4029376339039
	10	33904			18 mm	110	38,70	4029376339046
	10	33905			15 mm	110	38,70	4029376339053

Separate fittings:



Installation wrench plastic	1	33907					15,00	4029376339077
Installation wrench metal	1	33007					88,00	4029376330074
Adapter SW30	1	33001					75,00	4029376330012
Dirt strainer	1	33910					1,40	4029376339107
Profile gasket for inlet	1	33501					2,00	4029376335017
O-ring thread	1	33502					3,00	4029376335024

In-wall meters coax "ECO"

In-wall coax meter – dry dial without rosette –
 for modular radio, M-Bus and pulse systems

Connection thread G2B

Type:	PU	Code number	MID flow-rate Q ₃	Flowrate Qn m ³ /h	Size inch	Length mm	Price € / pc	EAN-code
In-wall measuring cartridge								
Cold water	30	50030	2,5	1,5	2"		56,00	4029376500309
Warm water	30	50040	2,5	1,5	2"		56,00	4029376500408
In-wall housing								
	10	23901			1/2" 15 mm	110	48,00	4029376239018
	10	23902			3/4" 18 mm	110	48,00	4029376239025
	10	23903			22 mm	110	48,00	4029376239032
	10	23904			3/4" IG	110	48,00	4029376239049
	10	23905			1/2" IG	110	48,00	4029376239056
	10	23906			3/4" AG	80	48,00	4029376239063
Brass cap								
	10	23908					14,00	4029376239087



Separate fittings:

Installation accessories: sealing ring and profile gasket								
	10	60028					9,00	4029376600283
Profile gasket								
	10	50029					3,00	4029376500293
In-wall coax brass extension								
	10	50050				20	39,00	4029376500507
In-wall coax brass extension								
	10	50060				40	43,00	4029376500606
Flow convertor								
	10	50070					130,00	4029376500705

Compact valve meter "ECO" type for installation on concealed valves



Compact "ECO" type – armature and measuring head for modular radio, M-Bus and pulse systems

Type:	PU	Code number	MID flow-rate Q ₃	Flowrate Q _n m ³ /h	Size inch	Length mm	Price € /pc	EAN-code
VTZ								
Cold water	10	42103	2,5	1,5			147,00	4029376421031
Warm water	10	42603	2,5	1,5			147,00	4029376426036
VTZ connecting piece	10	42901			1/2"	40	24,00	4029376429013
	10	42902			3/4"	40	24,00	4029376429020
	10	42903			1"	40	58,00	4029376429037
Extension for connecting piece	10	42904				25	21,00	4029376429044
Flow convertor	10	42905			1/2"		350,00	4029376429051
	10	42906			3/4"		350,00	4029376429068
	10	42907			1"		350,00	4029376429075
Separate fittings:								
Armature including flap rosette and knob	10	42100					82,00	4029376421000
Measuring head, cold	10	42101	2,5	1,5			65,00	4029376421017
Measuring head, warm	10	42102	2,5	1,5			65,00	4029376421024
Knob	10	45000					9,00	4029376450000
Flap rosette	10	45001					10,00	4029376450017
Adapter for VTZ-Armature Compact incl. profiled Gasket		45002					8,00	4029376450024
Filter Adapter for VTZ-Measuring Head incl. O-Rings		45003					6,00	4029376450031
Brass shut-off valve upper piece including grid socket 3/4"	10	34007					19,00	4029376340042

Bath tub meter "ECO" for installation between armature and inlet

Compact type – armature and measuring head including rosette –
for modular radio, M-Bus and pulse systems

Type:	PU	Code number	MID flow-rate Q ₃	Flowrate Qn m ³ /h	Size inch	Length mm	Price € /pc	EAN-code
BWZ Cold water	10	52103	2,5	1,5	3/4"		133,00	4029376521038
BWZ Warm water	10	52603	2,5	1,5	3/4"		133,00	4029376526033
Levelling piece for bath tub	10	52901			3/4"	55	14,80	4029376529010



Separate fittings:

Armature	10	50100			1/2"		68,00	4029376501009
Armature	10	52100			3/4"		65,00	4029376521007
Measuring head, cold	10	42101	2,5	1,5			65,00	4029376421017
Measuring head, warm	10	42102	2,5	1,5			65,00	4029376421024

Note: System components from page 24 onwards.



Valve meter coax "ECO" for installation on concealed valves



Coax type "ECO" – armature and coax measuring cartridge
for modular radio, M-Bus and pulse systems

Type:	PU	Code number	MID flow-rate Q ₃	Flowrate Qn m ³ /h	Size inch	Length mm	Price € /pc	EAN-code
Valve meter incl. collar and flap-rosette								
Cold water	10	40103	2,5	1,5			190,00	4029376401033
Warm water	10	40603	2,5	1,5			190,00	4029376406038
VTZ (valve meter) connecting piece	10	40901			1/2"	40	24,00	4029376409015
	10	40902			3/4"	40	24,00	4029376409022
	10	40903			1"	40	30,00	4029376409039
	10	40904			1/2"	60	32,00	4029376409046
	10	40905			3/4"	60	32,00	4029376409053
	10	40906			1"	60	40,00	4029376409060
	10	40907			1/2"	80	36,00	4029376409077
	10	40908			3/4"	80	36,00	4029376409084
	10	40909			1"	80	65,00	4029376409091
	10	40910			1/2"	100	64,00	4029376409107
	10	40911			3/4"	100	64,00	4029376409114
	10	40912			1"	100	85,00	4029376409121
	10	40913			1/2"	120	89,00	4029376409138
	10	40914			3/4"	120	89,00	4029376409145
	10	40915			1"	120	110,00	4029376409152
	10	40916			1/2"	140	110,00	4029376409169
	10	40917			3/4"	140	110,00	4029376409176
	10	40918			1"	140	125,00	4029376409183
	10	40919			1/2"	160	125,00	4029376409190
	10	40920			3/4"	160	125,00	4029376409206
10	40921			1"	160	145,00	4029376409213	
10	40922			1/2"	180	140,00	4029376409220	
10	40923			3/4"	180	140,00	4029376409237	
10	40924			1"	180	160,00	4029376409244	

Separate fittings:

VTZ armature incl. shut-off valve, union nut and flap rosette	10	40050					118,00	4029376400050
Measuring cartridge Cold water	30	50030	2,5	1,5			56,00	4029376500309
Measuring cartridge Warm water	30	50040	2,5	1,5			56,00	4029376500408
Flap rosette for armature	10	40300					8,00	4029376403006
Collar incl. PVC-ring	10	40200				60	16,00	4029376402009
Collar incl. PVC-ring	10	*40250				60	20,00	4029376402504
Knob with valve Brass upper part	10	40010					26,00	4029376400104

* for insert with radio module

Unimeter "ECO" – the intelligent measuring cartridge system

Replacement program dry dial
for modular radio, M-Bus and pulse systems

Type:	PU	Code number	MID flow rate Q ₃	Flow rate QN m ³ /h	Length mm	Price € / pc	EAN-code
compatible with: ISTA (COAX) – connection thread G2B							
Cold water	30	50030	2,5	1,5		56,00	4029376500309
Warm water	30	50040	2,5	1,5		56,00	4029376500408

compatible with: ABB, Elster, Andrae, Kundo – connection thread M65x2							
Cold water	30	60010	2,5	1,5		41,00	4029376600108
Warm water	30	60020	2,5	1,5		41,00	4029376600207

compatible with: Allmess, Kalorimeta – connection thread M77x1,5							
Cold water	30	60050	2,5	1,5		54,00	4029376600504
Warm water	30	60060	2,5	1,5		54,00	4029376600603

compatible with: SPX, Rossweiner, ZR-Neptun – connection thread M78x1,5							
Cold water	30	60070	2,5	1,5		40,00	4029376600702
Warm water	30	60080	2,5	1,5		40,00	4029376600801

compatible with: Metrona 307/1 – connection thread M66x1							
Metrona 307/1 (delivered until 1998)							
Cold water	30	60110	2,5	1,5		43,00	4029376601105
Warm water	30	60120	2,5	1,5		43,00	4029376601204

compatible with: Metrona 307/2 – connection thread M64x2							
Metrona 307/2 (delivered from 1999)							
Cold water	30	60150	2,5	1,5		66,00	4029376601501
Warm water	30	60160	2,5	1,5		66,00	4029376601600

compatible with: Techem Vario S – connection thread M62x2							
Cold water	30	60230	2,5	1,5		66,00	4029376602300
Warm water	30	60240	2,5	1,5		66,00	4029376602409

compatible with: Minol MB 2 – connection thread M80x1,5							
Cold water	30	60290	2,5	1,5		102,00	4029376602904
Warm water	30	60300	2,5	1,5		102,00	4029376603000



Note: The System components from page 24 and the Mounting accessories from page 48 onwards.



Unimeter "ECO" – the intelligent measuring cartridge system



Replacement program dry dial
for modular radio, M-Bus and pulse systems

Type:	PU	Code number	MID flow rate Q ₃	Flow rate QN m ³ /h	Length mm	Price € / pc	EAN-code
compatible with: Minol MB3 – connection thread M76x1,5							
Cold water	30	60310	2,5	1,5		94,00	4029376603109
Warm water	30	60320	2,5	1,5		94,00	4029376603208
compatible with: Pollumuk – connection thread G2x1/4"							
Cold water	30	60510	2,5	1,5		54,00	4029376605103
Warm water	30	60520	2,5	1,5		54,00	4029376605202
compatible with: Deltamess – connection thread M60x2							
Cold water	30	60610	2,5	1,5		54,00	4029376606100
Warm water	30	60620	2,5	1,5		54,00	4029376606209

Measuring heads for valve meters "ECO"



Replacement program dry dial
for modular radio, M-Bus and pulse systems

Type:	PU	Code number	MID flow rate Q ₃	Flow rate QN m ³ /h	Length mm	Price € / pc	EAN-code
compatible with: Allmess – connection thread M38x1,5							
Cold water	10	42101	2,5	1,5		65,00	4029376421017
Warm water	10	42102	2,5	1,5		65,00	4029376421024
compatible with: Wehrle – connection thread 1 1/4"							
Cold water	30	46101	2,5	1,5		65,00	4029376461013
Warm water	30	46102	2,5	1,5		65,00	4029376461022
compatible with: Minol – connection thread M38x1,5							
Cold water	30	44101	2,5	1,5		65,00	4029376441015
Warm water	30	44102	2,5	1,5		65,00	4029376441022

System components of the "ECO"-Generation



System components of "ECO"-Generation



Optical pulse cable with reverse flow monitoring

Type:	PU	Code Number	Length	Price € / pc	EAN-code
pulse K1 (1l per pulse)	1	95001	2 m	98,00	4029376950012
pulse K10 (10l per pulse)	1	95011	2 m	98,00	4029376950111
pulse K100 (100l per pulse)	1	95111	2 m	98,00	4029376951118



Module for remote control via M-Bus

M-Bus device	1	95002	2 m	95,00	4029376950029
--------------	---	-------	-----	-------	---------------



Radio module "FLOWIS"

Flowis	1	95400		84,00	4029376954003
--------	---	-------	--	-------	---------------

"FLOWIS"
innovative products with parametrized Radio module



Apartment water meter "FLOWIS"



Apartment water meter –
innovative products with parametrized radio module

Measuring range R 80-H / R 50-V

Type:	PU	Code number	MID flow-rate Q ₃	Flowrate Q _n m ³ /h	Size inch	Length mm	Price € /pc	EAN-code
ETW	30	05101	2,5	1,5	1/2"	60	148,00	4029376051016
Cold water	30	05102	2,5	1,5	1/2"	80	81,00	4029376051023
	30	05103	2,5	1,5	1/2"	110	81,00	4029376051030
	30	05105	4	2,5	3/4"	130	89,00	4029376051054
	ETW	30	05601	2,5	1,5	1/2"	60	148,00
Warm water	30	05602	2,5	1,5	1/2"	80	81,00	4029376056028
	30	05603	2,5	1,5	1/2"	110	81,00	4029376056035
	30	05605	4	2,5	3/4"	130	89,00	4029376056059

Unimeter "FLOWIS"

Relacement program dry dial –
 innovative products with parametrized radio module



Type:	PU	Code number	MID flow-rate Q ₃	Flowrate Qn m ³ /h	Price € /pc	EAN-code
-------	----	-------------	------------------------------	-------------------------------	-------------	----------

compatible with: Wasser-Geräte – connection thread M66x1.25

Cold water	30	00103	2,5	1,5	148,00	4029376001035
Warm water	30	00603	2,5	1,5	148,00	4029376006030

compatible with: ISTA (KOAX) – connection thread G2B

Cold water	30	00030	2,5	1,5	160,00	4029376000304
Warm water	30	00040	2,5	1,5	160,00	4029376000403

compatible with: ABB, Elster, Andrae, Kundo – connection thread M65x2

Cold water	30	00010	2,5	1,5	145,00	4029376000106
Warm water	30	00020	2,5	1,5	145,00	4029376000205

compatible with: Allmess, Kalorimeta – connection thread M77x1,5

Cold water	30	00050	2,5	1,5	158,00	4029376000502
Warm water	30	00060	2,5	1,5	158,00	4029376000601

compatible with: SPX, Rossweiner, ZR-Neptun – connection thread M78x1,5

Cold water	30	00070	2,5	1,5	144,00	4029376000700
Warm water	30	00080	2,5	1,5	144,00	4029376000809

compatible with: Metrona 307/1 – connection thread M66x1

Cold water	30	00110	2,5	1,5	147,00	4029376001103
Warm water	30	00120	2,5	1,5	147,00	4029376001202

compatible with: Metrona 307/2 – connection thread M64x2

Cold water	30	00150	2,5	1,5	170,00	4029376001509
Warm water	30	00160	2,5	1,5	170,00	4029376001608

compatible with: Techem Vario-S – connection thread M62x2

Cold water	30	00230	2,5	1,5	170,00	4029376002308
Warm water	30	00240	2,5	1,5	170,00	4029376002407

compatible with: Minol MB 2 – connection thread M80x1,5

Cold water	30	00290	2,5	1,5	206,00	4029376002902
Warm water	30	00300	2,5	1,5	206,00	4029376003008

Unimeter "FLOWIS"



Replacement program dry dial
with parametrized "FLOWIS"-Radio module

Type:	PU	Code number	MID flow-rate Q_3	Flowrate Q_n m ³ /h	Price € / pc	EAN-code
compatible with: Minol MB 3 – connection thread M76x1,5						
Cold water	30	00310	2,5	1,5	171,00	4029376003107
Warm water	30	00320	2,5	1,5	171,00	4029376003206

compatible with: Pollumuk – connection thread G2x1/4"						
Cold water	30	00510	2,5	1,5	123,00	4029376005101
Warm water	30	00520	2,5	1,5	123,00	4029376005200

compatible with: Deltamess – connection thread M60x2						
Cold water	30	00610	2,5	1,5	158,00	4029376006108
Warm water	30	00620	2,5	1,5	158,00	4029376006207

Measuring heads "FLOWIS"



Replacement program dry dial –
innovative products with parametrized radio module

Type:	PU	Code number	MID flow-rate Q_3	Flowrate Q_n m ³ /h	Price € / pc	EAN-code
compatible with: Allmess – connection thread M38x1,5						
Cold water	10	02101	2,5	1,5	169,00	4029376021019
Warm water	10	02102	2,5	1,5	169,00	4029376021026

compatible with: Wehrle – connection thread 1 1/4"						
Cold water	10	04101	2,5	1,5	169,00	4029376041017
Warm water	10	04102	2,5	1,5	169,00	4029376041024

compatible with: Minol – connection thread M 38x1,5						
Cold water	10	06101	2,5	1,5	169,00	4029376061015
Warm water	10	06102	2,5	1,5	169,00	4029376061022

Soft- and Hardware – for "FLOWIS"-Radio module

Smartphone with Bluetooth in an adequate case

Type:	PU	Code Number	Price € / pc	EAN-code
uleFone Armor 8 4/ 64 GB; 6,1"	1	95300	1900,00	4029376953006



Datacollector with Bluetooth-Antenna and programming head

Type:	PU	Code Number	Price € / pc	EAN-code
	1	95100	2500,00	4029376951002



Readout Software "LIBRA RS"

Type:	PU	Code Number	Price € / pc	EAN-code
Android 4.4	1	95200	2820,00	4029376952009



Apartment water meter "WG-Electronicflow"



Apartment water meter "WG-ElectronicFlow"



Electronic apartment water meter
with integrated wM-Bus technology, OMS-compatible and LCD-display

Measuring range up to R200H/R100V

Type:	PU	Code number	MID flow-rate Q_3	Flowrate Q_n m ³ /h	Size inch	Length mm	Price € /pc	EAN-code
ElectronicFlow Cold water	30	37102	2,5	1,5	1/2"	80	98,00	4029376371022
	30	37103	2,5	1,5	1/2"	110	98,00	4029376371039
	30	37105	4	2,5	3/4"	130	107,00	4029376371053
ElectronicFlow Warm water	30	37602	2,5	1,5	1/2"	80	98,00	4029376376027
	30	37603	2,5	1,5	1/2"	110	98,00	4029376376034
	30	37605	4	2,5	3/4"	130	107,00	4029376376058

Unimeter "WG-Electronicflow"

Electronic replacement program dry dial
 with integrated radio system, OMS-compatible and digital LCD-display



Type:	PU	Code number	MID flow rate Q_3	Flow rate QN m^3/h	Price € / pc	EAN-code
-------	----	-------------	---------------------	----------------------	--------------	----------

compatible with: Wasser-Geräte – connection thread M66x1.25

Cold water	7	77103	2,5	1,5	178,00	4029376771038
Warm water	7	77603	2,5	1,5	178,00	4029376776032

compatible with: ISTA (KOAX) – connection thread G2B

Cold water	7	37030	2,5	1,5	192,00	4029376370308
Warm water	7	37040	2,5	1,5	192,00	4029376370407

compatible with: ABB, Elster, Andrae, Kundo – connection thread M65x2

Cold water	7	37010	2,5	1,5	174,00	4029376370100
Warm water	7	37020	2,5	1,5	174,00	4029376370209

compatible with: Allmess, Kalorimeta – connection thread M77x1,5

Cold water	7	37050	2,5	1,5	190,00	4029376370506
Warm water	7	37060	2,5	1,5	190,00	4029376370605

compatible with: SPX, Rossweiner, ZR-Neptun – connection thread M78x1,5

Cold water	6	37070	2,5	1,5	173,00	4029376370704
Warm water	6	37080	2,5	1,5	173,00	4029376370803

compatible with: Metrona 307/1 – connection thread M66x1

Metrona 307/1 (delivered until 1998)

Cold water	7	37110	2,5	1,5	177,00	4029376371107
Warm water	7	37120	2,5	1,5	177,00	4029376371206

compatible with: Metrona 307/2 – connection thread M64x2

Metrona 307/2 (delivered from 1999)

Cold water	7	37150	2,5	1,5	204,00	4029376371503
Warm water	7	37160	2,5	1,5	204,00	4029376371602

compatible with: Techem Vario-S – connection thread M62x2

Cold water	7	37230	2,5	1,5	204,00	4029376372302
Warm water	7	37240	2,5	1,5	204,00	4029376372409

compatible with: Minol MB 2 – connection thread M80x1,5

Cold water	6	37290	2,5	1,5	248,00	4029376372906
Warm water	6	37300	2,5	1,5	248,00	4029376373002

Unimeter "WG-Electronicflow"



Electronic replacement program dry dial with integrated wM-Bus technology, OMS-compatible and LCD-display

Type:	PU	Code number	MID flow-rate Q_3	Flowrate Q_n m ³ /h	Price € / pc	EAN-code
compatible with: Minol MB 3 – connection thread M76x1,5						
Cold water	30	37310	2,5	1,5	238,00	4029376373101
Warm water	30	37320	2,5	1,5	238,00	4029376373200

compatible with: Pollumuk – connection thread G2x¼"						
Cold water	30	37510	2,5	1,5	190,00	4029376375105
Warm water	30	37520	2,5	1,5	190,00	4029376375204

compatible with: Deltamess – connection thread M60x2						
Cold water	30	37610	2,5	1,5	203,00	4029376376102
Warm water	30	37620	2,5	1,5	203,00	4029376376201

Measuring heads "WG-Electronicflow"



Electronic replacement program dry dial with integrated wM-Bus technology, OMS-compatible and LCD-display

Type:	PU	Code number	MID flow-rate Q_3	Flowrate Q_n m ³ /h	Price € / pc	EAN-code
compatible with: Allmess – connection thread M38x1,5						
Cold water	10	37101	2,5	1,5	169,00	4029376371015
Warm water	10	37111	2,5	1,5	169,00	4029376371114

Apartment water meter "WG-ElectronicFlow" Plastic version

Electronic apartment water meter
with integrated wM-Bus technology, OMS-compatible and LCD-display

Measuring range up to R200H/R100V – Grivory

Type:	PU	Code number	MID flow-rate Q ₃	Flowrate Qn m ³ /h	Size inch	Length mm	Price € /pc	EAN-code
ElectronicFlow Cold water	30	31102	2,5	1,5	1/2"	80	93,00	4029376311028
	30	31103	2,5	1,5	1/2"	110	93,00	4029376311035
	30	31105	4	2,5	3/4"	130	102,00	4029376311059
ElectronicFlow Warm water	30	31602	2,5	1,5	1/2"	80	93,00	4029376316023
	30	31603	2,5	1,5	1/2"	110	93,00	4029376316030
	30	31605	4	2,5	3/4"	130	102,00	4029376316054



Unimeter "WG-ElectronicFlow" Plastic version

Electronic replacement program dry dial
with integrated radio system, OMS-compatible and digital LCD-display

Type:	PU	Code number	MID flow-rate Q ₃	Flowrate Qn m ³ /h	Price € /pc	EAN-code
compatible with: ISTA (KOAX) – connection thread G2B – Grivory						
Cold water	30	31030	2,5	1,5	188,00	4029376310304
Warm water	30	31040	2,5	1,5	188,00	4029376310403



Heat meters



Heat meters for reliable measurement tailored to suit the needs

VoluMess VI comfort version – with removable counter



Diameter 5,0 mm

Type:	PU	Code number	Flowrate Qp m ³ /h	Size inch	Length mm	Price € /pc	EAN-code
VoluMess VI - E	12	75000	0,6	1/2"	110	410,00	4029376750001
	12	75001	1,5	1/2"	110	410,00	4029376750018
	12	75002	1,5	3/4"	130	420,00	4029376750025
	12	75003	2,5	3/4"	130	430,00	4029376750032

VoluMess VI comfort version – Ultrasonic heat meter



Diameter 5,0 mm

Type:	PU	Code number	Flowrate Qp m ³ /h	Size inch	Length mm	Price € /pc	EAN-code
VoluMess VI - US	12	79050	1,5	1/2"	110	520,00	4029376790502
	12	79060	2,5	3/4"	130	550,00	4029376790601

Extra charge:

Forward flow device	10	70001				132,00	4029376700013
cable length 3 m	10	70002				140,00	4029376700020
Diameter 5.2	10	70003				128,00	4029376700037

Heat meters for a reliable measurement tailored to suit the needs

VoluMess VI – Coax type exchange heat meter

Diameter 5,0 mm

Type:	PU	Code number	Flowrate Qp m³/h	Size inch	Length mm	Price € /pc	EAN-code
VoluMess VI - I	12	75004	0,6	2"		420,00	4029376750049
	12	75005	1,5	2"		420,00	4029376750056
	12	75006	2,5	2"		440,00	4029376750063



VoluMess VI comfort version – Allmess exchange heat meter

Diameter 6,0 mm

Type:	PU	Code number	Flowrate Qp m³/h	Size inch	Length mm	Price € /pc	EAN-code
VoluMess VI - A	12	79001	1,5	M77x1,5		410,00	4029376790014
	12	79002	2,5	M77x1,5		430,00	4029376790021



VoluMess VI comfort version – Techem exchange heat meter

Diameter 5,2 mm

Type:	PU	Code number	Flowrate Qp m³/h	Size inch	Length mm	Price € /pc	EAN-code
VoluMess VI - T	12	79010	1,5	M62x2		450,00	4029376790106
	12	79020	2,5	M62x2		470,00	4029376790205



VoluMess VI comfort version – Minol exchange heat meter

Diameter 5,0 mm

Type:	PU	Code number	Flowrate Qp m³/h	Size inch	Length mm	Price € /pc	EAN-code
VoluMess VI - M	12	79100	1,5	M60x1,5		450,00	4029376791004
	12	79200	2,5	M60x1,5		470,00	4029376792001



Heat meter – communication modules



VoluMess VI

Type:	PU	Code number	Flowrate Qp m ³ /h	Size inch	Length mm	Price € /pc	EAN-code
wireless M-Bus radio module	10	71000				380,00	4029376710005
M-Bus module incl. connection cable	10	72000				180,00	4029376720004

Heat meters – Accessories

Installation kit for heat meters – direct measurement, including:

1 ball valve with connection for measuring probe, 1 nickel-plated fitting piece, 1 pair of brass couplings

Type:	PU	Code number	Size inch	Length mm	Price € /pc	EAN-code
EBS (installation kit)	10	73630	1/2"	110	37,00	4029376736302
	10	73631	3/4"	130	60,00	4029376736319



Installation kit for heat meters – direct measurement, including:

1 ball valve with connection for measuring probe, 1 nickel-plated fitting piece, 2 ball valves without connection for measuring probe

Type:	PU	Code number	Size inch	Length mm	Price € /pc	EAN-code
EBS (installation kit)	10	73632	1/2"	110	65,00	4029376736326
	10	73633	3/4"	130	90,00	4029376736333



Installation kit for coax heat meters, including:

1 ball valve with connection for measuring probe, 1 in-wall housing

Type:	PU	Code number	Size inch	Length mm	Price € /pc	EAN-code
EBS (installation kit)	10	73670	1/2"	110	50,00	4029376736708
	10	73671	3/4"	130	56,00	4029376736715



Installation kit for coax heat meters, including:

1 ball valve with connection for measuring probe, 1 in-wall housing, 2 ball valves without connection for measuring probe

Type:	PU	Code number	Size inch	Length mm	Price € /pc	EAN-code
EBS (installation kit)	10	73672	1/2"	110	85,00	4029376736722
	10	73673	3/4"	130	110,00	4029376736739



Separate fittings:

Type:	PU	Code number	Zoll	Length mm	Price € /pc	EAN-code
Sealing fitting kit	10	73601			5,00	4029376736012

Woltman meters



Woltman bulk meters dry dial for cold water up to 30°C transmitter refit

Woltman meters for horizontal and vertical installation PN 10/16



Type:	PU	Code number	DN mm	MID flow-rate Q ₃	Length mm	Price € / pc	EAN-code
WPX	1	13000	50	40	200	950,00	4029376130001
	1	13001	65	63	200	1050,00	4029376130018
	1	13002	80	100	225	1150,00	4029376130025
	1	13003	100	160	250	1380,00	4029376130032
	1	13004	125	160	250	1500,00	4029376130049
	1	13005	150	250	300	2100,00	4029376130056
	1	13006	200	400	350	2550,00	4029376130063

Standard pulse value for reed contact:

DN 50 - DN 125 100l.

DN 150 1.000l.

Separate fittings:

RKK-WPX	1	13997			1,5 m	140,00	4029376139974
---------	---	-------	--	--	-------	--------	---------------



Installation rack



Installation rack WG-TEC 3000 – Double

Measurements (mm) width 290 – height 210 – depth 71



brass execution with standard valve

Type:	PU	Code number	Price € / pc	EAN-code
WASSER-GERÄTE	1	33712	260,00	4029376337127
ALLMESS	1	33714	270,00	4029376337141
KOAXIAL	1	33722	270,00	4029376337226

brass execution with DVGW valve

Type:	PU	Code number	Price € / pc	EAN-code
WASSER-GERÄTE	1	33812	300,00	4029376338124
ALLMESS	1	33814	330,00	4029376338148
TECHEM	1	33820	350,00	4029376338209
KOAXIAL	1	33822	320,00	4029376338223

red brass execution with standard valve

Type:	PU	Code number	Price € / pc	EAN-code
KOAXIAL	1	31722	350,00	4029376317228

Installation rack WG-TEC 3000 – Single

Measurements (mm) width 150 – height 210 – depth 71

brass execution with standard valve

Type:	PU	Code number	Price € / pc	EAN-code
WASSER-GERÄTE	1	32712	170,00	4029376327128
ALLMESS	1	32714	190,00	4029376327142
KOAXIAL	1	32722	190,00	4029376327227



brass execution with DVGW valve

Type:	PU	Code number	Price € / pc	EAN-code
WASSER-GERÄTE	1	32812	200,00	4029376328125
ALLMESS	1	32814	220,00	4029376328149
TECHEM	1	32820	240,00	4029376328200
KOAXIAL	1	32822	210,00	4029376328224

red brass execution with standard valve

Type:	PU	Code number	Price € / pc	EAN-code
KOAXIAL	1	34722	200,00	4029376347225

Installation thread WG-TEC 3000



brass execution with standard valve

Type:	PU	Code number	Price € / pc	EAN-code
WASSER-GERÄTE	1	35712	70,00	4029376357125
KOAXIAL	1	35722	65,00	4029376357224

brass execution with DVGW valve

Type:	PU	Code number	Price € / pc	EAN-code
WASSER-GERÄTE	1	35812	85,00	4029376358122
KOAXIAL	1	35822	90,00	4029376358221

red brass execution with standard valve

Type:	PU	Code number	Price € / pc	EAN-code
KOAXIAL	1	36722	95,00	4029376367223



Valve surface set for WG-TEC installation rack including sleeve with jackscrew, rosette, knob

Type:	PU	Code number	Length mm	Price € / pc	EAN-code	
VT OT	cold/warm water	1	34001	70	28,00	4029376340011
		1	35001	43	26,00	4029376350010
Extension sleeve		1	34003	70	21,00	4029376340035
		1	35003	43	19,00	4029376350034

Separate fittings:

Mounting bracket with screws		35004		20,00	4029376350041
Shut-off valve upper part $\frac{3}{4}$ " brass	10	34004		18,00	4029376340042
Shut-off valve upper part $\frac{3}{4}$ " red brass	10	34005		22,00	4029376340059
Shut-off valve upper part $\frac{3}{4}$ " brass „DVGW“	10	34006		20,00	4029376340066

Mounting accessories



Mounting accessories

matching with COAX, Metrona 307/2, Techem Vario-S, ABB, Pollumuk



Type:	PU	Code number	Height collar	Outer-Ø rosette	Price € / pc	EAN-code
In-wall collar, rosette, ring – chromium-plated	10	60043	60	140	26,00	4029376600436
In-wall collar, rosette, ring including blind cover – chromium-plated	10	60048	60	140	34,00	4029376600481

Separate fittings:

In-wall rosette – chromium-plated	10	60025		140	10,00	4029376600252
In-wall collar – chromium-plated, incl. ring	10	60049	60		16,00	4029376600498
Blind cover – chromium-plated	10	33008		65,5	8,00	4029376330081
PVC ring	10	60030			4,00	4029376600306
PVC ring for Techem original (Vario S)	10	60031			4,50	4029376600313

matching with COAX, Metrona 307/2, Techem Vario-S, ABB, Pollumuk

In-wall collar, rosette, ring – chromium-plated	10	60047	75	140	32,00	4029376600474
In-wall collar, rosette, ring incl. blind cover – chromium-plated	10	60045	75	140	40,00	4029376600450

Separate fittings:

In-wall rosette – chromium-plated	10	60025		140	10,00	4029376600252
In-wall collar – chromium-plated, incl. ring	10	60026	75		22,00	4029376600269
Blind cover – chromium-plated	10	33008		65,5	8,00	4029376330081
PVC ring	10	60030			4,00	4029376600306
PVC ring for Techem original (Vario S)	10	60031			4,50	4029376600313

matching with COAX, Metrona 307/1, Metrona 307/2, Techem Vario-S, ABB, SPX, ZR-Neptun, Rossweiner, Pollumuk

in-wall push-on rosette incl. ring	10	60021		120	32,50	4029376600214
In-wall blind rosette incl. ring	10	33999		120	40,50	4029376339992

Separate fittings:

Blind cover – chromium-plated	10	33008		65,5	8,00	4029376330081
Spacing ring	10	60024			2,50	4029376600245

matching with Wasser-Geräte, Minol MB 2/MB 3, Deltamess

In-wall push-on rosette	10	33906		120	30,00	4029376339060
In-wall blind rosette	10	33908		120	38,00	4029376339084

Separate fittings:

Blind cover – chromium-plated	10	33008		65,5	8,00	4029376330081
-------------------------------	----	-------	--	------	------	---------------



Mounting accessories

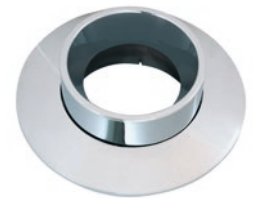
matching with Wasser-Geräte, COAX, ABB, Techem Vario-S, SPX, ZR-Neptun, Rossweiner, Pollumuk

Type:	PU	Code number	Height collar	Outer-Ø rosette	Price € / pc	EAN-code
In-wall push-on rosette	10	33006		140	30,00	4029376330067
In-wall blind rosette	10	33913		140	38,00	4029376339138
Separate fittings:						
Blind cover – chromium-plated	10	33008		65,5	8,00	4029376330081



matching with Allmess, Minol MB 2/MB 3, Deltamess

In-wall collar, rosette – chromium-plated	20	60001	56	140	30,00	4029376600016
In-wall collar, rosette – chromium-plated, including blind cover	20	60002	56	140	38,00	4029376600023
Separate fittings:						
Blind cover – chromium-plated	10	33911		64	8,00	4029376339114



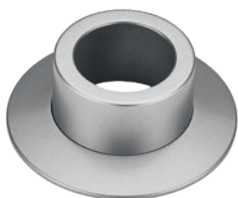
Mounting accessories for „FLOWIS“ radio device – chromium plated



matching with KOAX, Metrona 307/2, Techem Vario-S, ABB, Pollumuk, Allmess, Deltamess, Minol MB3

Type:	PU	Code number	Height collar	Outer-Ø rosette	Price € / pc	EAN-code
In-wall collar, rosette, ring	20	69008	66	137	32,00	4029376690086
In-wall collar, rosette, ring incl. blind cover	20	69009	66	137	40,00	4029376690093
Separate fittings:						
In-wall rosette chromium plated	10	69010		137	15,00	4029376690109
In-wall collar chromium plated	10	69011	66		17,00	4029376690116
Blind cover chromium-plated	10	33911		64	8,00	4029376339114

Mounting accessories for radio device – silver metallic



matching with COAX, Metrona 307/2, Techem Vario-S, ABB, Pollumuk

In-wall collar, rosette, ring	10	60046	60	140	34,00	4029376600467
In-wall collar, rosette, ring incl. blind cover	10	60051	60	140	42,00	4029376600511
Separate fittings:						
In-wall rosette	10	60052		140	14,00	4029376600528
In-wall collar, incl. ring	10	60044	60		20,00	4029376600443
Blind cover – chromium-plated	10	33008		65,5	8,00	4029376330081
PVC ring	10	60030			4,00	4029376600306

matching with COAX, Metrona 307/2, Techem Vario-S, ABB, Pollumuk

In-wall collar, rosette, ring	10	60053	75	140	40,00	4029376600535
In-wall collar, rosette, ring incl. blind cover	10	60054	75	140	48,00	4029376600542
Separate fittings:						
In-wall rosette	10	60052		140	14,00	4029376600528
In-wall collar, incl. ring	10	60055	75		26,00	4029376600559
Blind cover – chromium-plated	10	33008		65,5	8,00	4029376330081
PVC ring	10	60030			4,00	4029376600306

Universal in-wall wrench set for an unproblematic mounting and exchange of in-wall water meters

Wrench set for the most popular in-wall meter brands containing
11 mounting wrenches, adapter, levering wrench and socket

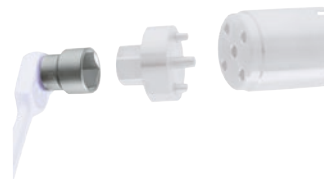
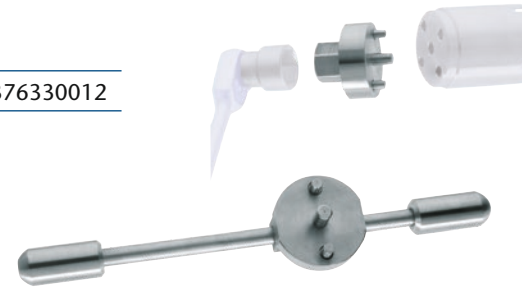
Type:	Code number	Price € / pc	EAN-code
In-wall wrench set in case, complete	33000	1400,00	4029376330005
High-quality metal case without content	33300	120,00	4029376333006
Wrench ABB adaption + coaxial systems ¹⁾	60042	88,00	4029376600429
Wrench ABB-W + Kundo ²⁾	60202	88,00	4029376602027
Wrench Allmess UP6000 ²⁾	60062	88,00	4029376600627
Wrench Metrona K3 + ABB M140/C + 307/A ²⁾	60162	88,00	4029376601624
Wrench Metrona 307/1 ²⁾	60122	88,00	4029376601228
Wrench Minol MB2 ²⁾	60302	88,00	4029376603024
Wrench Minol MB3 ²⁾	60322	88,00	4029376603222
Wrench Techem Vario S ²⁾	60242	88,00	4029376602423
Wrench Viterra II ²⁾	60342	88,00	4029376603420
Wrench Wasser-Geräte ²⁾	33007	88,00	4029376330074
Wrench Zenner + SPX + Rosswainer ²⁾	60102	88,00	4029376601020



1) matching with Unimeter type: Wasser-Geräte, type: coax, ABB, Pollumuk, Techem VarioS, Allmess, Metrona K3/W3, SPX, Minol MB3
2) for the equivalent original in-wall meters

Separate fittings:

Adapter SW30	33001	75,00	4029376330012
Leverage wrench	33002	95,00	4029376330029
Socket SW30	33003	50,00	4029376330036
Replacement sprockets with screws for mounting wrench 307/1	33004	5,00	4029376330043
Replacement bolt screws for adapter SW30	33005	5,00	4029376330050



Accessories

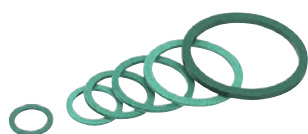


Accessories



Brass coupling, in pairs incl. gasket (2 sockets – 2 screw nuts – 2 gaskets)

Type:	PU Set	Code number	Size inch	Price € / pc	EAN-code
brass	10	90901	1/2"	6,50	4029376909010
	10	90902	3/4"	9,00	4029376909027
	10	90903	1"	17,00	4029376909034
	10	90904	1 1/2"	50,00	4029376909041
	10	90905	2"	94,00	4029376909058
chromium-plated	10	90906	1/2"	9,00	4029376909065
	10	90907	3/4"	11,00	4029376909072



Gaskets

Klingersil C4400 - KTW accredited, heat resistant up to 120°C

Type:	PU pcs	Code number	Size inch	Dimensions	Price € / pc	EAN-code
Klingersil	10	91909	1/2"	23,7x16,9x2	0,70	4029376919095
	10	91908	1/2"	23,7x16,9x3	0,80	4029376919088
	10	91910	3/4"	30x23x2	0,90	4029376919101
	10	90911	1"	37,8x29,5x2	1,40	4029376909119
	10	90912	1 1/2"	55x43x2,5	2,10	4029376909126
	10	90913	2"	69,5x58,8x4	4,10	4029376909133

Mounting accessories in poly bag

including 2 gaskets, 1 self-lock seal, 1 segment seal wire á 25 cm

Type:	PU pcs	Code number	Size inch	Diameter Gasket mm	Price € / pc	EAN-code
	10	92222	1/2"	23,7x16,9x2	4,00	4029376922224
	10	92223	1/2"	*23,7x16,9x3	4,20	4029376922237
	10	92224	3/4"	30x23x2	4,40	4029376922248

* for meter with a length of 80 mm

Accessories

Variable levelling pieces, brass execution

Type:	PU pcs	Code number	Size inch	Price € / pc	EAN-code
80 mm 1/2" extending to 105 mm 3/4"	10	90914	3/4"	5,80	4029376909140
110 mm 1/2" extending to 130 mm 1/2"	10	90915	1/2"	6,50	4029376909157
110 mm 1/2" extending to 130 mm 3/4"	10	90916	3/4"	5,80	4029376909164
110 mm 1/2" extending to 110 mm 3/4"	10	90917	3/4"	3,40	4029376909171
110 mm 1/2" extending to 165 mm 1/2"	10	90918	1/2"	15,00	4029376909188
130 mm 3/4" extending to 190 mm 3/4"	10	90919	3/4"	22,00	4029376909195



Ball valve with butterfly handle, chromium-plated

Type:	PU pcs	Code number	Size inch	Length mm	Price € / pc	EAN-code
with loose union nut						
	10	90944	3/4" x 1"	73	22,00	4029376909447
	10	90945	1/2" x 3/4"	64	16,00	4029376909454
	10	90946	3/4" x 3/4"	64	19,00	4029376909461
	10	90948	1" x 1"	86	23,00	4029376909485
with fixed union nut and connection for measuring probe						
	10	90947	3/4" x 3/4"	61	22,00	4029376909478
	10	90949	1" x 1"	65	29,00	4029376909492

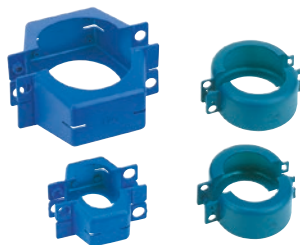


Fitting piece / meter replacement

Type:	PU pcs	Code number	Size inch	Length mm	Price € / pc	EAN-code
brass						
	10	90933	3/4"	110	15,00	4029376909331
	10	90943	1"	130	18,00	4029376909430
steel / nickel-plated						
	10	80833	3/4"	110	14,00	4029376808337
	10	80843	1"	130	17,00	4029376808436



Accessories



Sealing clips

Type:	PU pcs	Code number	Zoll	Price € / pc	EAN-code
angled	10	90938	1/2"	3,50	4029376909386
round	10	90939	3/4"	4,00	4029376909393
round	10	90940	1"	5,00	4029376909409
angled	10	90941	1 1/2"	12,00	4029376909416



Seals

Type:	PU pcs	Code number	Length mm	Price € / pc	EAN-code
Plastic	10	90934	knob: 10 mm	0,80	4029376909348
Self-lock	10	91934		0,80	4029376919347



Seal wire

Type:	PU pcs	Code number	Price € / pc	EAN-code
	1 bundle*	90935	80,00	4029376909355
	1 segment 25 cm	91935	0,40	4029376919354

*1.000 pcs., 25 cm each



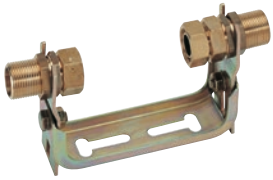
Non-return valves

Type:	PU pcs	Code number	Size inch	Price € / pc	EAN-code
	10	90930	1/2"	5,80	4029376909300
	10	90936	3/4"	6,50	4029376909362
	10	90937	1"	8,50	4029376909379
	10	90942	1 1/2"	27,50	4029376909423

Installation brackets



Water meter installation brackets



horizontal execution – adjustable – stainless steel

Type:	PU	Code number	MID flow-rate Q ₃	Flowrate Qn m ³ /h	Size inch	Length mm	Price € / pc	EAN-code
-------	----	-------------	------------------------------	-------------------------------	-----------	-----------	--------------	----------

WZ installation brackets

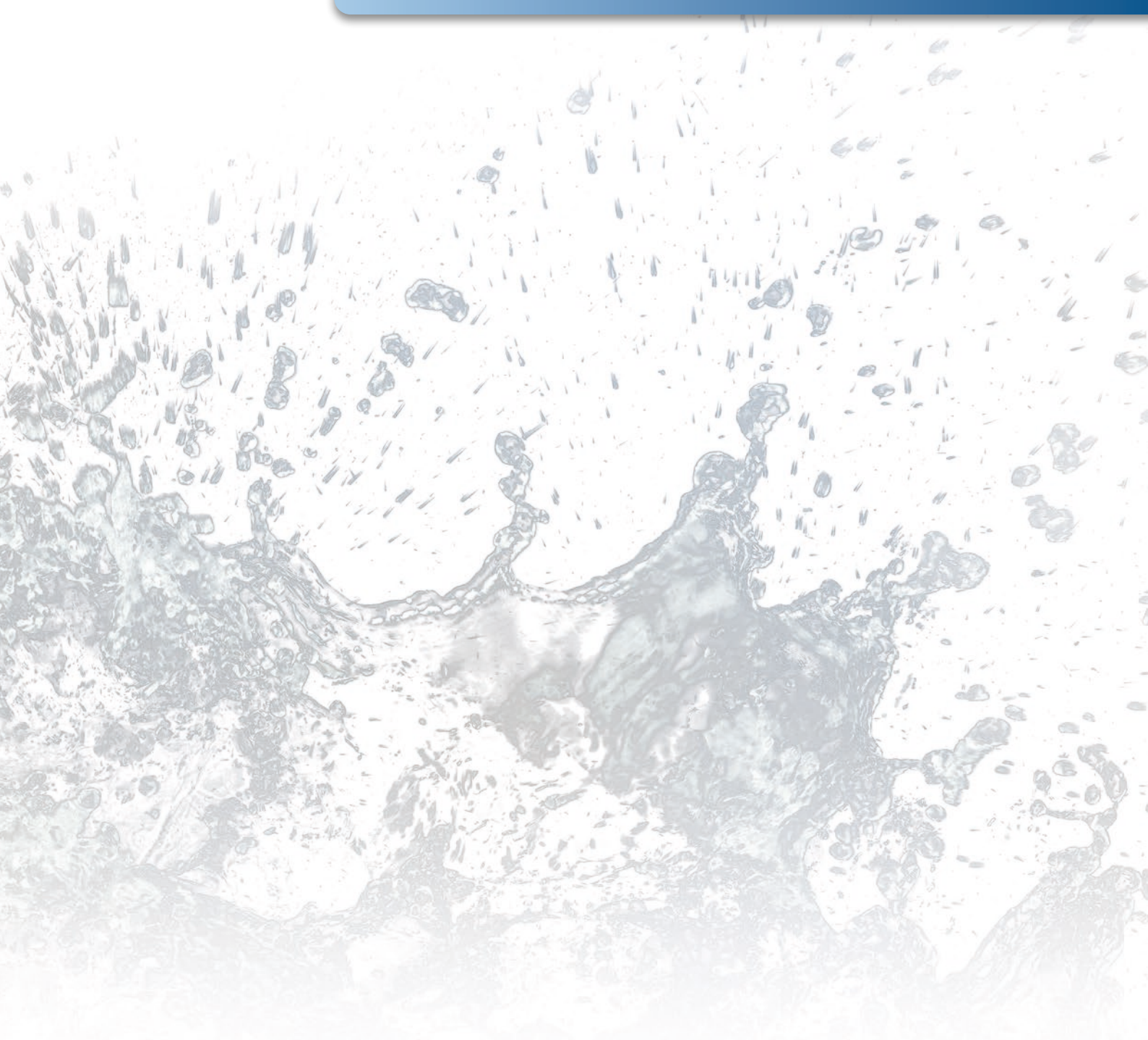
20	10151	4	2,5	3/4" x 3/4"	190	58,00	4029376101513
20	10152	4	2,5	1" x 3/4"	190	58,00	4029376101520
20	10153	4	2,5	1" x 1"	190	60,00	4029376101537



Spare parts for installation brackets

Type:	PU	Code number	MID flow-rate Q ₃	Flowrate Qn m ³ /h	Price € / pc	EAN-code
Crimp gasket (black)	10	12151	4	2,5	6,00	4029376121511
Cone gasket (brass)	10	12152	4	2,5	4,00	4029376121528

Things to know



Statutory calibration fees / conformity fees

Measuring devices for volumetric measurement of flowing cold and warm water

According to the MessEGebV from 30th of April 2019,

the fee schedule from Appendix II to Article 2 comes into force on 01/2021. The fees cannot be discounted or credited.

These services are non-discountable. The fees change for each applicable fee regulation.

QN m ³ /h (EWG)	Q3 m ³ /h (MID)	Price € from 01.01.21
1,5 - 6	2,5 - 10	9,90
10	16	13,90
15	25	66,50

Woltman meters

QN m ³ /h (EWG)	Q3 m ³ /h (MID)	Price € from 01.01.21
15 - 40	25 - 63	66,50
60 - 100	100 - 160	151,50
150	250	174,10
250	400	241,60

Compound water meters

QN m ³ /h (EWG)	Q3 m ³ /h (MID)	Price € from 01.01.21
15 - 40	25 - 63	162,00
60 - 100	100 - 160	247,00
150	250	269,60

Heat meters

Qp m ³ /h (EWG)	DN	Price € from 01.01.21
0,6 - 2,5	15 - 25	41,70

Result examination test

QN m ³ /h (EWG)	Q3 m ³ /h (MID)	Price € from 01.01.21
to 10	to 16	95,50
15 - 100	25 - 160	303,10
over 100	over 160	on request

As of 1th January 2021

MID – the European measuring directive

What does MID mean?

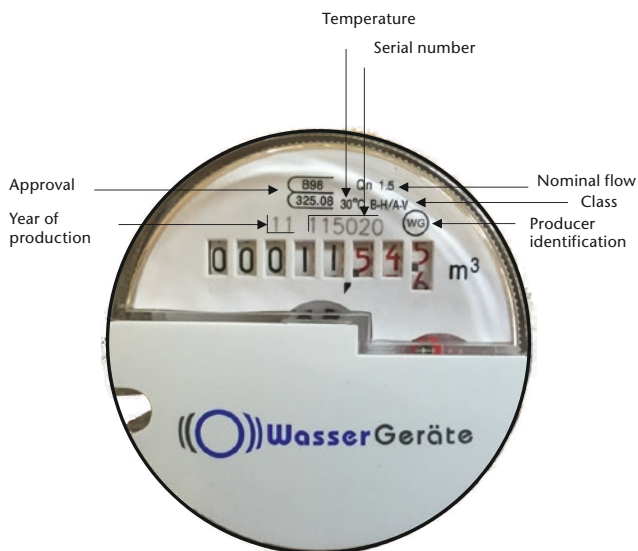
MID stands for „Measurement Instruments Directive“, updated with new version 2014/32/EU since 20.04.2016 and amended by 2015/13/EU. It regulates the process of manufacturing and conformity assessment of measuring devices (the conformity assessment replaces the previous verification) as well as their placing on the market (the transfer from the producer to the consumer).

Validity

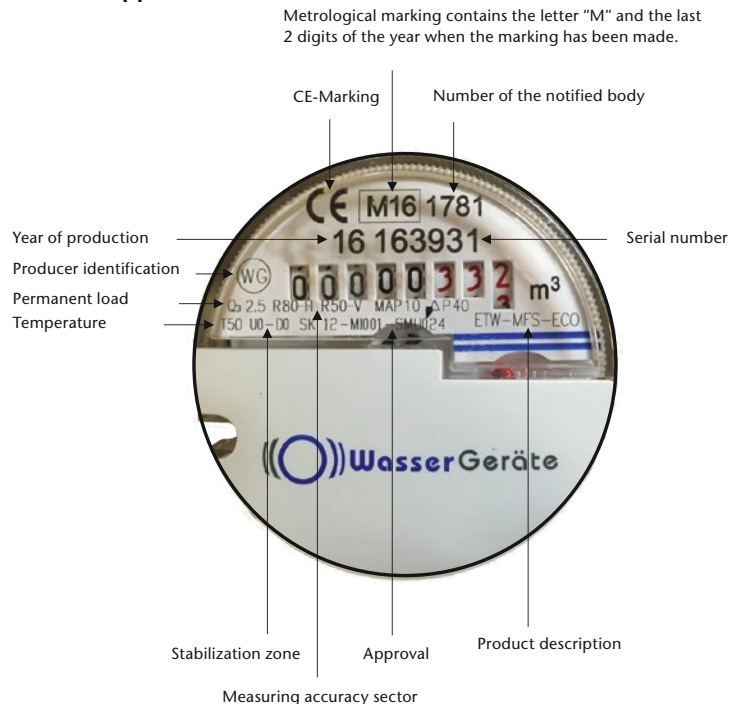
The MID is valid since 30.10.2006 with a transitional period of 10 years. Starting 30.10.2016 it will fully come into force. From then on only MID assessed water and heat meters may be placed on the market. An exception may be the subsequent verified meters which have been placed to market before 30.10.2016.

Marking of water meters

EEC approval



MID approval



Terms:

Domestic (EEC)	MID	Metrological classes	
QN	Q3	A	R 40
Qmin	Q1	B	R 50-80
		C	R 100-160

Nominal flows:

Domestic (EEC)	QN (m³/h)	MID Q3
1,5	2,5	
2,5	4,0	
3,5	6,3	
6,0	10,0	
10,0	16,0	

Your contact persons for all concerns regarding the measurement of water consumption

Management board

Herold Petrei
Managing partner

Management

Bettina Petrei
Phone +49 (0) 7424 9599-14
b.petrei@wasser-geraete.de

Executive Assistent

Nadine Petrei
Phone +49 (0) 7424 9599-13
n.petrei@wasser-geraete.de

Management office

Patricia Schmidt
Phone +49 (0) 7424 9599-22
Telefax +49 (0) 7424 9599-30
p.schmidt@wasser-geraete.de

Head office

Phone +49 (0) 7424 9599-0
Telefax +49 (0) 7424 9599-20
zentrale@wasser-geraete.de

Customer Service

Sina Stier
Phone +49 (0) 7424 9599-10
Telefax +49 (0) 7424 9599-20
s.stier@wasser-geraete.de

Technical Manager

Wolfgang Spang
Phone +49 (0) 177 6255351
Telefax +49 (0) 6894 1690139
w.spang@wasser-geraete.de

Julia Glöckler
Phone +49 (0) 7424 9599-19
Telefax +49 (0) 7424 9599-20
j.gloeckler@wasser-geraete.de

Domestic sales

Elke Haller
Phone +49 (0) 7424 9599-15
Telefax +49 (0) 7424 9599-20
e.haller@wasser-geraete.de

Technical customer service

Thomas Schäfer
Phone +49 (0) 7424 9599-15
Telefax +49 (0) 7424 9599-20

Sales municipal enterprises

Julia Glöckler
Phone +49 (0) 7424 9599-19
Telefax +49 (0) 7424 9599-20
j.gloeckler@wasser-geraete.de

Export Management

Loredana Scavo
Phone +49 (0) 7424 9599-16
Telefax +49 (0) 7424 9599-30
l.scavo@wasser-geraete.de

Additional information

Pricing

All previous gross price lists are hereby becoming invalid. For water meters which are subject to calibration or conformity the prices are quoted before calibration fee / conformity fee.

Value added tax

All prices are valid ex works plus the statutory value added tax valid the day of billing.

Conformity fee / calibration fee

The fees valid on the day of delivery apply. Conformity and calibration fees are statutory submissions and thus not discountable. The fees change according to the particular valid fees regulation.

Delivery conditions

For a value of goods of 1000,- € and above we do not charge freight and package. Collective shipments are not admitted. We do not add a minimum quantity surcharge. Our General terms and conditions of sales and delivery apply.

Withdrawal costs

The withdrawal of slow-moving or faulty goods is not possible. For faultless goods in original packing we do charge a handling fee of 20%; the credit note can only be made if you indicate our invoice number. Return consignments shall be delivered free to the door, otherwise they will not be accepted. If the return is justified we will refund the postal charges.

Verification costs

For faultless returns we generally charge a fee of 50,- € for verification costs for cold and warm water meters including the test report and the protocol.

Offers for leasing

If you do not want to tie up capital by investing in your own water meter we are happy to assist you.

Sales and Delivery Terms and Conditions

I. General Scope

These Terms and Conditions shall govern all business relationships with our customers. They shall apply to all of our sales and delivery contracts for mobile goods (also referred to as "merchandise"), regardless of whether we manufacture such goods in-house or have third parties manufacture them on our behalf. These Terms and Conditions shall also apply to all future contracts concerning goods made with the same Customer.

Conflicting terms of the Customer shall become integral components of the Contract only if we have expressly consented to the applicability of the Customer's terms in writing.

II. Execution of the Contract/Assignment of Customer's Rights and Obligations

1. The Customer shall be bound by the purchase order for a maximum of 4 weeks. The Contract shall be deemed to have been executed once the Supplier – hereinafter referred to as WG – acknowledges the acceptance of the order for the delivery object defined more specifically in the order in writing by the specified deadline or if the Supplier executes the delivery. However, WG shall undertake to notify the Customer immediately if the order will not be accepted.
2. Any assignment of rights and obligations of the Customer arising from the Contract shall be subject to WG's written consent.

III. Prices/Payment Terms

1. The applicable prices are stipulated in the respective price lists in effect at the time and shall be deemed quoted ex works unless otherwise agreed upon. Shipping costs shall be charged separately and all shipments shall be carried out at Customer's risk.
2. Certification/notarization fees shall be charged separately as miscellaneous services.
3. The Customer shall have the option to offset any Customer claims against WG claims only if the counter claim of the Customer is undisputed or if a legally effective title is available; rights to withhold may be claimed by the Customer only if the claim is based on entitlements arising from the respective Contract.

IV. Delivery and Delays in Delivery

1. Delivery deadlines and delivery times, which may be agreed upon as binding or non-binding, shall be specified in writing. Delivery times shall begin upon execution of the Contract.
2. The Customer shall have the option to prompt WG to deliver six weeks after a non-binding delivery deadline or delivery time has been exceeded. WG shall be in default of delivery as soon as the reminder notice has been received. In the event that the Customer should be entitled to reimbursement of the damages caused by this default, it shall be limited to a maximum of 5 % of the agreed upon price if the default was the result of minor negligence at WG's end. If the Customer intends to additionally rescind from the Contract and/or demand compensation for damages in lieu of performance, the Customer shall undertake to set a reasonable remedial period for delivery by WG upon expiration of the 6-week-period pursuant to Sentence 1. If the Customer should be entitled to compensation for damages in lieu of performance, the entitlement shall be limited to a maximum of 25 % of the agreed upon purchase price if the damages were caused by minor negligence at WG's end. If the Customer should be a legal entity under public law, a public law based special entity or an entrepreneur, who when entering into the Contract is acting in a commercial or independent professional capacity, any damage compensation shall be excluded in the event of minor negligence. If the delivery should become accidentally impossible for WG during the time of default, WG shall assume liability within the above agreed-upon liability limitations. WG shall not assume any liability if the damages would also have occurred had the delivery been made in a timely manner.
3. If a binding delivery deadline or a binding delivery time is exceeded, WG shall be in default as soon as the delivery deadline or delivery time is exceeded. Customer's rights shall be governed by Section IV 2 Sentences 3 through 8 of this Section.
4. Acts of force majeure at WG's or WG's suppliers' end resulting in operational interruptions that temporarily prevent WG or its suppliers from delivering the purchased goods by the agreed upon deadline or within the agreed upon delivery time for reasons they are not responsible for, shall result in the prolongation of the deadlines and times specified in Sections 1 through 3 of this Article by the duration of the operational interruptions caused by these circumstances. If such disturbances should lead to a delay of the services by more than four months, the Customer shall have the option to rescind from the Contract. This shall be without prejudice to any other rights to rescind.
5. WG reserves the right to implement manufacturer design or form changes, deviations in color as well as changes to the scope of delivery during the delivery time if these changes or deviation, taking into account WG's interests, are acceptable for the Customer. If WG or the manufacturer should use marks or numbers for the designation of the purchase order or the purchased goods, this alone shall not suffice to establish any rights.

V. Title Retention

1. WG shall retain title to the subject matter of the Contract until the accounts receivable due for the delivery arising from the purchase order have been paid in full.
2. Prior to complete payment for the collateralized accounts receivable, the goods that are subject to title retention may neither be pledged nor assigned as collateral to any third parties. The Customer shall undertake to notify WG in writing if and to the extent third parties gain access to the title retention goods.
3. If the Customer should be a legal entity under public law, a public law based special entity or an entrepreneur, who when entering into the Contract is acting in a commercial or independent professional capacity, the title retention shall also remain in effect for all accounts receivable due to WG from the Customer from the current business relationship until all accounts receivable related to the purchase have been paid. Upon Customer's request, WG shall undertake to waive title retention once the Customer has met all payment obligations related to the purchase object in an uncontested manner and if reasonable collateral is available for the remaining accounts receivable from the current business relationship.
4. In the event that the Customer should be in default of payment, WG may rescind the purchase contract. If WG is also entitled to compensation for damages in lieu of performance and if WG seizes the purchase object, WG and the Customer agree that WG shall reimburse the sales value of the purchase object at the time of its return excluding any miscellaneous cost items, such as certification/notarization fees and shipping costs. At Customer's request, which may be made only promptly upon seizure of the purchase object, a publicly appointed and sworn expert assessor as designated by the Customer shall determine the common sales value. The Customer shall absorb all costs for the seizure and liquidation of the purchase object. In the absence of documentation, the liquidation costs shall total 5 %

of the common sales value. They shall be set higher or lower if WG can provide evidence of higher or the Customer can provide evidence of lower costs.

5. The Customer shall not be permitted to make any dispositions as to the purchase object nor shall Customer be allowed to grant third parties any contractual utilization rights as long as title retention is in effect.
6. However, the Customer shall have the right to sell and/or process the title retention goods as part of Customer's proper business operations. The following shall apply in this case:
 - a. The title retention provision shall also apply to the processing, blending or combination of the title retention goods at its full value, whereby WG shall be considered the manufacturer. If a title retention right is maintained along with third party goods, WG shall acquire a co-ownership title based on the value ratio of the invoiced values of the processed, blended or combined goods.
 - b. The Customer herewith assigns as collateral to WG any accounts receivable generated from the resale of the goods or the product in full or in the amount of the respective co-ownership share. WG herewith accepts this assignment.
 - c. In addition to WG, the Customer shall retain the right to collect the accounts receivable for such goods. As long as the Customer meets Customer's payment obligations, WG shall not collect the accounts receivable. However, if the Customer should be in default of payment, if bankruptcy proceedings should be initiated against the Customer or if any other deficiencies should arise as far as Customer's ability to perform is concerned, WG shall be authorized to collect these payments. The Customer shall undertake to provide WG with the required information. The Customer shall disclose to WG the accounts receivables as well as the debtors and shall provide all information required to execute the collection measures.
7. The Customer shall have the right to demand the release of collateral from WG as soon as the purpose for the collateral is partially or wholly null and void.

VI. Material Deficiencies

1. Entitlements of the Customer arising from material and legal deficiencies (including erroneous or short deliveries as well as deficient installation instructions) shall be subject to the statute of limitations prescribed by law. In deviation from this provision, sales to a legal entity under public law, a public law based special entity or an entrepreneur, who when entering into the Contract is acting in a commercial or independent professional capacity, shall be subject to a statute of limitations of 6 months as of the delivery of the purchase object. This shall be without prejudice to any further entitlements in the event of malicious failure to reveal deficiencies or if a warranty for the condition of the goods has been assumed.
2. However, entitlements arising from deficiencies shall be contingent upon the Customer having met the statutory inspection and claim submission obligations (§ 377, 381 HGB = German Commercial Code).
3. No liability shall be assumed for damages that are the result of improper or unsuitable use, incompatible operating resources or inadequate treatment or insufficient maintenance, incompatible fuels or replacement materials, deficient installation work, chemical, electrical or electrical-mechanical impact. Improper modifications or repair work shall also result in the exclusion of liability for deficiencies.
4. The following shall apply to the handling of deficiency elimination claims:
 - a. The Customer shall contact WG exclusively to settle entitlements to deficiency elimination.
 - b. WG shall acquire title to any replaced components.
 - c. The Customer shall be able to file warranty claims for installed components only until the statute of limitations for the delivered object has expired.
5. Change of ownership of the purchased object shall be without prejudice to the entitlement to damage elimination claims.

VII. Liability

1. Unless the following provisions indicate otherwise, WG shall assume liability in compliance with the statutory provisions in the event of breaches of duty.
2. In the event that based on these statutory provisions and the stipulations of these Terms and Conditions, WG should be required to compensate any damages caused by minor neglect, WG shall assume limited liability. Liability shall exist only in the event that cardinal contractual obligations have been breached and liability shall be limited to the typical damages that were foreseeable at the time the Contract was executed. This limitation shall not apply in the event of the cause of loss of life, personal injury or health damages. If damages are covered by an insurance policy obtained by the Customer for the related incident (exception: summary insurance), WG shall assume liability only for any related disadvantages incurred by the Customer, e.g. increased insurance premiums or interest disadvantages until the damages have been settled by the insurance company. No liability shall be assumed damages caused by a defect of the purchase object due to minor neglect.
3. The above shall not apply to WG's liability in the event of malicious failure to disclose the deficiency and in the event that a warranty was assumed. This shall be without prejudice to the statutory product liability vis-à-vis the end Customer.
4. Article IV shall govern all liability matters related to delivery default.
5. The personal liability of the statutory representatives, agents and workforce members of the supplier for damages caused by their minor negligence shall be excluded.

VIII. Governing Law, Place of Jurisdiction, Severance Clause

1. The legal relationship between the Parties and any potentially involved third parties shall be governed by the laws of the Federal Republic of Germany.
2. The sole place of jurisdiction for any and all current and future entitlements arising from business relationships with professional commercial agents, including bank draft and check receivables shall be the domicile of WG.
3. The same place of jurisdiction shall be deemed agreed upon if the Customer does not have a general place of jurisdiction in Germany, relocates his/her place of residency or common domicile to a venue outside of Germany or if his/her place of residence or common domicile is not known at the time a lawsuit is filed. Incidentally, if the Supplier should have claims against the Customer, the latter's place of residence shall be the place of jurisdiction.
4. In the event that one or several provisions of these Sales and Delivery Terms and Conditions should be ineffective or unenforceable, the remaining provisions shall remain in effect. In lieu of the ineffective or unenforceable provision(s), the provision(s) shall apply that meets the business objective of the ineffective or unenforceable provision(s) as closely as possible. This shall also apply in the event that omissions should arise in the provisions.

Wasser-Geräte GmbH, Status: March 2016

wasser-geraete.de – always and everywhere up-to-date

Available online effective immediately:

- all information regarding our latest product releases
- detailed product information
- current tender specifications
- extensive installation instructions
- all data sheets for our products
- important certificates
- the latest news regarding the drinking water regulation and further statutory regulations
- the right contact person



Wasser-Geräte GmbH

Head office: Max-Planck-Straße 20 | 78549 Spaichingen, Germany

Phone +49 (0) 7424 9599-0 | Fax +49 (0) 7424 9599-20

www.wasser-geraete.de | info@wasser-geraete.de

Order acceptance: order@wasser-geraete.de

